

NEMA 4

nano



R⁵ NEMA 4 refrigerated compressed air dryers

flow capacity: 30 - 200 scfm (51 - 340 Nm³/hr)



NEMA 4 refrigerated compressed air dryers

flow capacity: 30 - 200 scfm (51 - 340 Nm³/hr)

R⁵

Leading edge technology and hundreds of years of **experience**...nano-purification solutions, your world-class manufacturer of state-of-the-art compressed air and gas solutions to industry.

Our commitment at nano is to work alongside our **customers** and provide unique solutions with the highest quality products to solve your specific challenges.

A wealth of experience and leading edge products are only part of the equation. nano recognize that world-class customer **service** is the most important component to any successful business.

Experience. Customer. Service... **nano**



clean and dry

Clean and dry compressed air is essential in every efficient and profitable manufacturing and process operation worldwide. Our vast experience includes food, beverage, chemical, laboratory, medical and natural gas applications.

nano understand your needs and has created the nano R⁵ range of high-performance, energy-saving compressed air and gas purification products to provide clean and dry compressed air at an affordable price with unrivaled reliability.



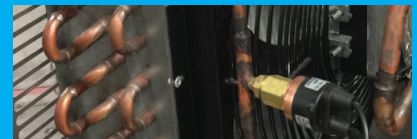
design

Our experienced team of design engineers are always looking for new and unique technologies and products to bring you the highest level of performance and lowest overall operating cost.



research & development

Our R&D team endeavor to provide solutions that go beyond developing an existing product. They are continually researching new technologies which can provide unique advantages over competitive offerings.

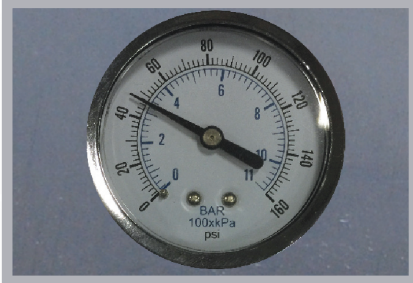


manufacture

The reliable and energy saving nano R⁵ refrigerated air dryers are manufactured in a state of the art facility to the highest standards of build quality to ensure reliability and high levels of performance.



nano NEMA 4 dryers – R⁵ features and benefits in detail



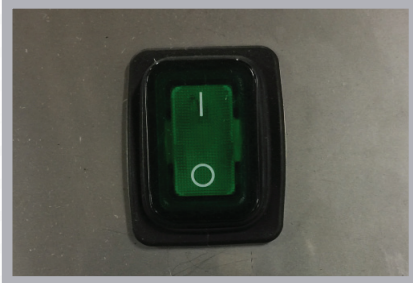
refrigerant gauge standard
for ease of troubleshooting



316 stainless steel heat exchanger
corrosion resistant stainless steel plate heat exchangers ensure the highest heat transfer efficiency and most consistent dew points available



robust construction
NEMA 4 stainless steel panels are corrosion resistant



controls
simple illuminated on/off switch; NEMA 4 rated



environmentally friendly
R134a refrigerant is recognized as both efficient and safe



Danfoss compressor
utilization of Danfoss hermetically sealed compressors.



adjustable timer drain standard
timed solenoid drain is fully adjustable and extremely reliable



designed for harsh environments
designed for harsh environments and outdoor installations. ambient temperature ranges from 35 to 115°F

sizing & specifications

model	inlet & outlet ⁽¹⁾		rated flow ⁽²⁾		absorbed power ⁽³⁾	dimensions (inches)			approx. weight	power supply (V/Ph/60Hz) ⁽⁴⁾		recommended pre & after filtration	
	NPT	scfm	Nm ³ /h	kW	A	B	C	lbs	115/1	208/230/1	pre filter	after filter	
ND4X 30	½"	30	51	0.15	16	22	22	100	●		NF0030M1	NF0030M01	
ND4X 40	½"	40	68	0.19	16	22	22	120	●		NF0050M1	NF0050M01	
ND4X 60	½"	60	102	0.25	16	22	22	160	●		NF0070M1	NF0070M01	
ND4X 80	½"	80	136	0.25	16	22	22	175	●		NF0085M1	NF0085M01	
ND4X 100	1 ¼"	100	170	0.37	16	22	22	210	●		NF0280M1	NF0280M01	
ND4X 125	1 ¼"	125	212	0.56	22	24	32	260	●		NF0280M1	NF0280M01	
ND4X 150	1 ¼"	150	255	0.56	22	24	32	290	●		NF0280M1	NF0280M01	
ND4X 200	1 ½"	200	340	0.75	22	24	32	350		●	NF0290M1	NF0290M01	

specifications	ND4X 30 to 125	ND4X 150 to 200
design operating pressure range	0 to 250 psig	0 to 250 psig
maximum inlet temperature	180°F	120°F
maximum ambient temperature	110°F	

pressure correction factors ⁽⁴⁾									
inlet air pressure (psig)	50	80	100	125	150	175	200	250	
correction factor	0.85	0.95	1.00	1.07	1.13	1.18	1.20	1.35	

inlet temperature correction factors ⁽⁴⁾								
inlet air temperature (°F)	80	90	100	110	120	140	160	
correction factor	1.50	1.21	1.00	0.82	0.72	0.61	0.53	

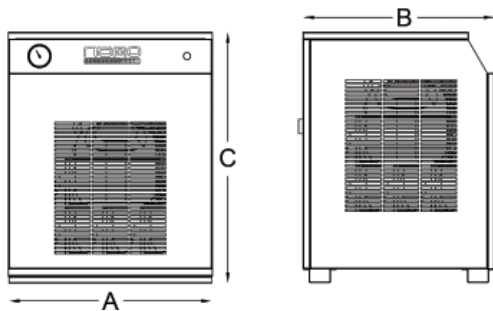
ambient temperature correction factors ⁽⁴⁾							
ambient temperature (°F)	70	80	90	100	110	115	
correction factor	1.10	1.07	1.05	1.00	0.94	0.65	

(1) NEMA 4 is standard on all R5 dryers

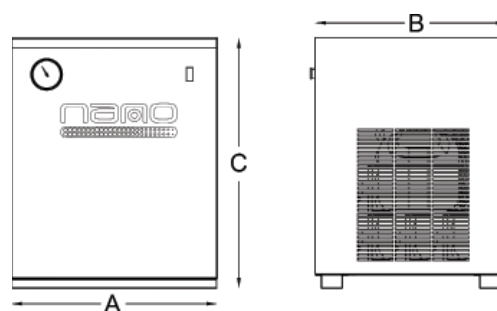
(2) in compliance with ADF 100 specifications for compressed air dryers: Inlet temperature: 100°F, ambient temperature: 100°F, inlet pressure: 100 psig, pressure dew point: 33°F to 39°F. For all other conditions refer to the correction factors above or contact support@n-psi.com

(3) nominal absorbed power at rated operating conditions using 115/1/60 or 230/1/60 power supply (as applicable). For absorbed power at other voltages or conditions, contact support@n-psi.com

(4) to be used as a rough guide only. All applications should be confirmed by nano sizing software. Contact support@n-psi.com for sizing assistance



ND4X 30 to 100



ND4X 125 to 200

nano-purification solutions llc
charlotte, north carolina
united states

nano-purification solutions ltd
gateshead, tyne and wear
united kingdom

nano-purification solutions
st. catharines, ontario
canada

tel: 704.897.2182 • fax: 704.897.2183 • support@n-psi.com • www.n-psi.com



nano
PURIFICATION SOLUTIONS

copyright PURIFICATION SOLUTIONS LLC
publication referencen-psi-R5-01-us